

Fact Sheet

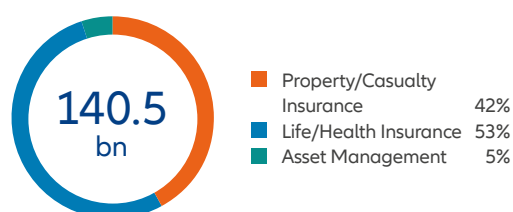
About us

The Allianz Group is a global financial services provider with services predominantly in the insurance and asset management business. Over 100 million retail and corporate clients¹ in more than 70 countries rely on our knowledge, global presence, financial strength and solidity. In fiscal year 2020 over 150,000 employees worldwide achieved total revenues of 140.5 billion euros and an operating profit of 10.8 billion euros. Allianz SE, the parent company, is headquartered in Munich, Germany.

Financial results

Revenues Allianz Group 2020: EUR 140.5 bn

by segments

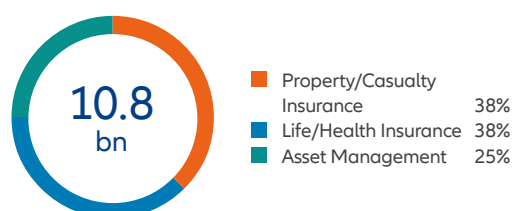


by regions^{2,3}

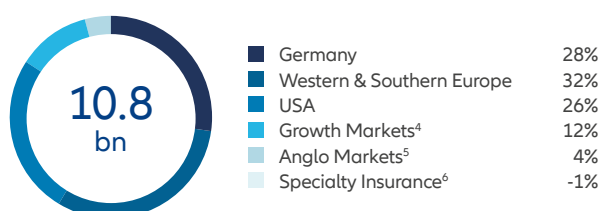


Operating Profit Allianz Group 2020: EUR 10.8 bn

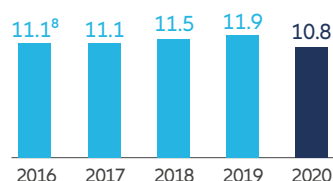
by segments⁷



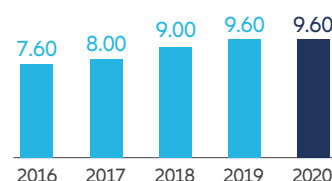
by regions²



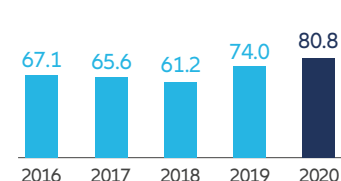
Operating Profit
EUR bn



Dividend per share
EUR

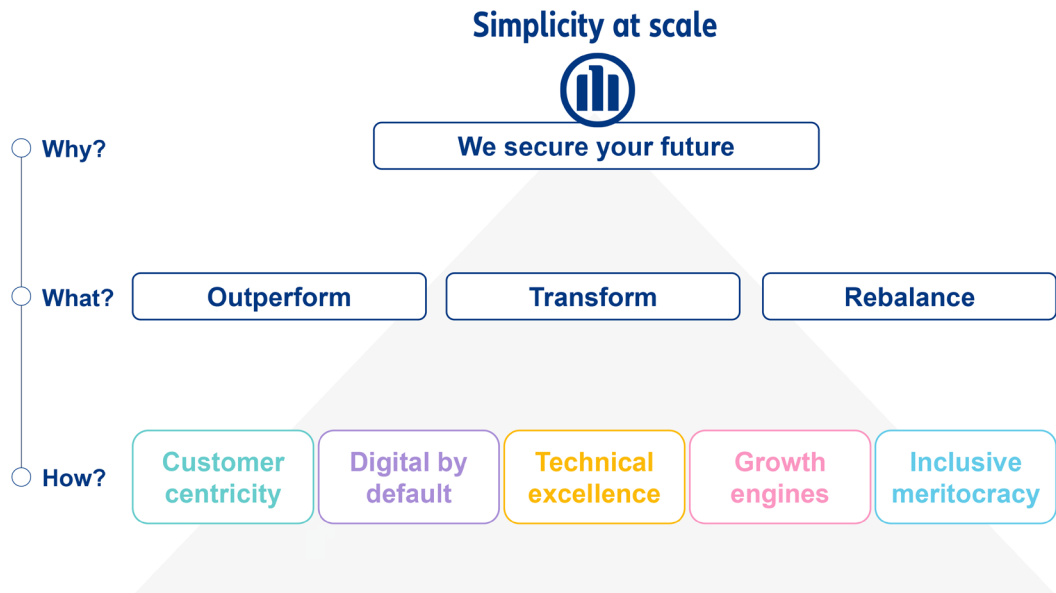


Shareholders' equity
EUR bn



Financial statements on the basis of IFRS. Fiscal year = calendar year

- Including non-consolidated entities with Allianz customers
- Excl. Corporate & Other and consolidations
- Incl. Banking
- Central and Eastern Europe, Asia-Pacific, Latin America, Middle East and Africa, Turkey. Austria still allocated to Western and Southern Europe.
- UK, Ireland, Australia
- Allianz Global Corporate & Specialty, Euler Hermes, Allianz Partners, Allianz Re
- Excl. "Corporate & Other" and consolidation between segments
- 2016 figures have been restated for changed accounting policy



Our strengths

Globally ...

- leading Property and Casualty insurer
- among the top 5 Life/Health business
- among the top 5 asset managers
- leader in credit insurance
- leader in assistance services
- one of the leading corporate insurers

• Top ratings:

Standard & Poor's
AA
Stable outlook

Moody's
Aa3
Stable outlook

A.M. Best
A+
Stable outlook

• Key figures:

Combined ratio 2020
96.3%

Solvency ratio 2020
207%

Our brands

Top Brands



Our share

WKN 840 400 ISIN DE 000 840 400 5

Shareholder structure as of 12/31/2020:

Number of shareholders: **703,254**

Number of shares: **412,293,128**

Market capitalization 12/31/2020: **EUR 82.7bn**



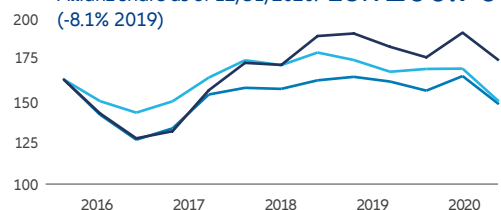
In % of issued capital:

- Private shareholders 22%
- Institutional shareholders 78%

Free float: 100%

Share price performance

Allianz share as of 12/31/2020: **EUR 200.70**
(-8.1% 2019)



- Allianz (Xetra)
- STOXX Europe 600 Insurance
- EURO STOXX 50

Indices in relation to the Allianz share price; Source: Bloomberg

Our employees

as of 31. December	2020
Germany	39,768
Rest of Europe	61,359
Asia-Pacific & Africa	33,586
America	15,556
Total	150,269



- Germany
- Rest of Europe
- Asia-Pacific & Africa
- America

Our management



Oliver Bäte
CEO



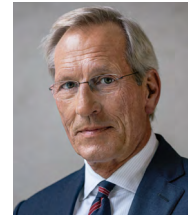
Sergio Balbinot
Insurance
Asia Pacific



Sirma Boshnakova
Insurance Western
& Southern Europe,
Allianz Direct,
Allianz Partners



Dr. Barbara Karuth-Zelle
Operations & IT



Michael Diekmann
Chairman of the
Supervisory Board



Dr. Klaus-Peter Röhler
Insurance German
Speaking Countries
and Central &
Eastern Europe



Ivan de la Sota
Business Transfor-
mation, Insurance
Iberia & Latin
America



Giulio Terzariol
Finance, Controlling,
Risk (CFO)



Dr. Günther Thallinger
Investment
Management,
ESG



Christopher Townsend
Global Insurance
Lines & Anglo Mar-
kets, Reinsurance,
Middle East, Africa



Renate Wagner
Human Resources,
Legal, Compliance,
Mergers &
Acquisitions



Dr. Andreas Wimmer
Asset Management,
US Life Insurance

Corporate history

Company foundation	02/05/1890 in Berlin
First traded	12/12/1895 on the Berlin Stock exchange
Member of the DAX	06/23/1988 as one of the founding members
Conversion to SE (Societas Europaea)	10/13/2006 as first DAX-Company

Contact

Allianz Investor Relations:

Allianz SE Tel.: +49 89 3800 7555
Koeniginstrasse 28 investor.relations@allianz.com
80802 Munich www.allianz.com/ir